

Main results

System Production

Produced Energy

163515 kWh/year

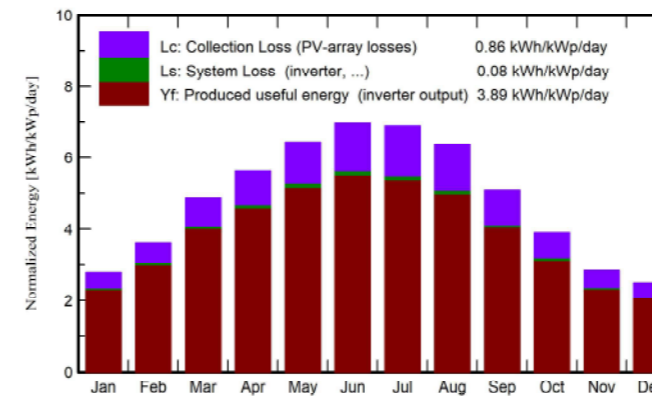
Specific production

1419 kWh/kWp/year

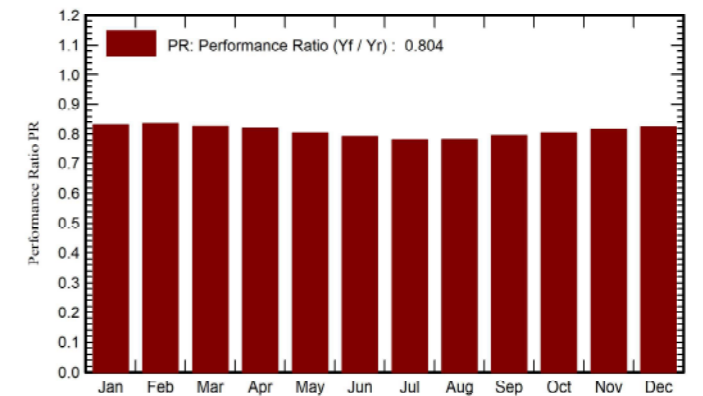
Perf. Ratio PR

80.44 %

Normalized productions (per installed kWp)



Performance Ratio PR



Balances and main results

	GlobHor kWh/m ²	DiffHor kWh/m ²	T_Amb °C	GlobInc kWh/m ²	GlobEff kWh/m ²	EArray kWh	E_Grid kWh	PR ratio
January	62.6	24.39	7.08	86.5	83.0	8440	8280	0.831
February	80.1	35.48	7.86	101.0	97.3	9880	9706	0.834
March	129.7	51.67	11.15	151.1	146.4	14642	14360	0.825
April	157.1	74.50	13.64	168.6	163.9	16236	15920	0.819
May	194.2	77.34	17.40	199.8	194.2	18917	18514	0.804
June	208.1	84.46	21.86	209.2	203.4	19501	19080	0.792
July	210.8	82.11	24.53	213.7	207.7	19662	19219	0.781
August	186.1	74.69	24.50	197.7	192.5	18233	17817	0.782
September	135.6	57.62	20.48	152.9	148.2	14297	13998	0.795
October	99.3	44.14	17.14	120.9	116.8	11442	11206	0.805
November	64.2	28.70	11.41	85.6	82.0	8201	8047	0.816
December	54.2	23.08	7.89	77.6	74.1	7512	7369	0.825
Year	1581.9	658.18	15.46	1764.6	1709.3	166963	163515	0.804

Legends

GlobHor Global horizontal irradiation

DiffHor Horizontal diffuse irradiation

T_Amb Ambient Temperature

GlobInc Global incident in coll. plane

GlobEff Effective Global, corr. for IAM and shadings

EArray Effective energy at the output of the array

E_Grid Energy injected into grid

PR Performance Ratio

