

Roof plan - Estimated annual photovoltaic production

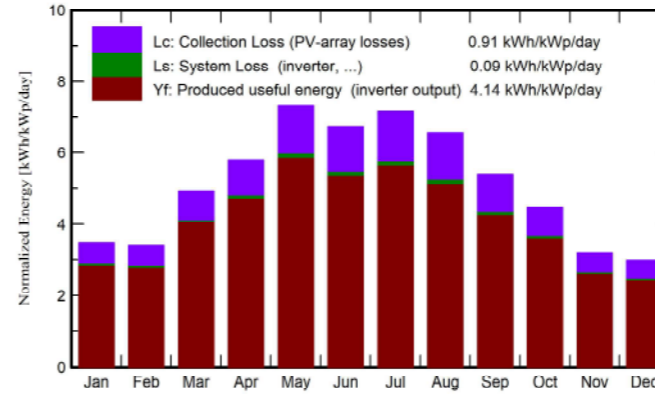
Main results

System Production

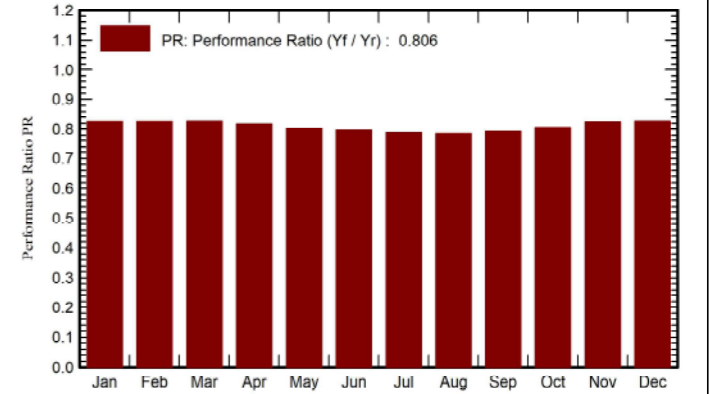
Produced Energy 173900 kWh/year

Specific production 1510 kWh/kWp/year
 Perf. Ratio PR 80.57 %

Normalized productions (per installed kWp)



Performance Ratio PR



Balances and main results

	GlobHor kWh/m ²	DiffHor kWh/m ²	T_Amb °C	GlobInc kWh/m ²	GlobEff kWh/m ²	EArray kWh	E_Grid kWh	PR ratio
January	73.8	19.31	9.80	107.6	103.0	10417	10231	0.825
February	75.4	33.11	9.49	95.4	91.7	9242	9070	0.825
March	130.6	49.02	9.52	152.4	147.6	14797	14515	0.827
April	160.6	61.69	12.98	173.8	169.1	16718	16376	0.818
May	219.8	66.55	17.81	227.1	221.5	21431	20958	0.801
June	200.7	76.84	19.68	202.3	197.2	18984	18571	0.797
July	217.8	72.16	22.59	222.3	216.9	20659	20193	0.788
August	191.6	63.08	23.46	203.5	198.1	18822	18396	0.785
September	142.8	54.35	20.64	161.9	157.1	15121	14797	0.793
October	112.1	38.58	17.49	139.0	134.6	13165	12899	0.805
November	70.5	28.40	10.64	95.8	91.8	9258	9087	0.824
December	62.7	21.02	9.27	92.5	88.4	8960	8808	0.826
Year	1658.4	584.11	15.32	1873.6	1817.1	177574	173900	0.806

Legends

- GlobHor Global horizontal irradiation
- DiffHor Horizontal diffuse irradiation
- T_Amb Ambient Temperature
- GlobInc Global incident in coll. plane
- GlobEff Effective Global, corr. for IAM and shadings
- EArray Effective energy at the output of the array
- E_Grid Energy injected into grid
- PR Performance Ratio