

Planta cubierta - Producción fotovoltaica anual estimada

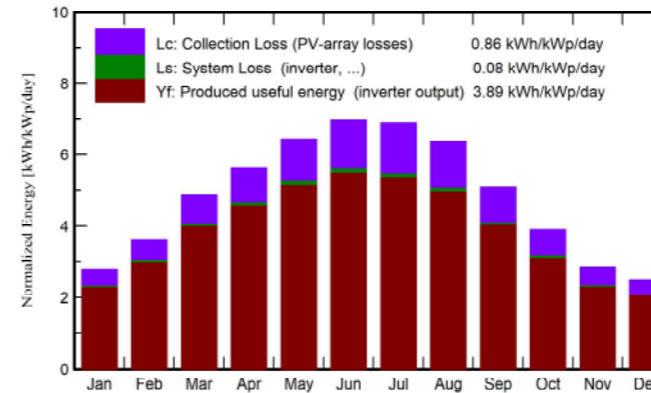
**Main results**

**System Production**

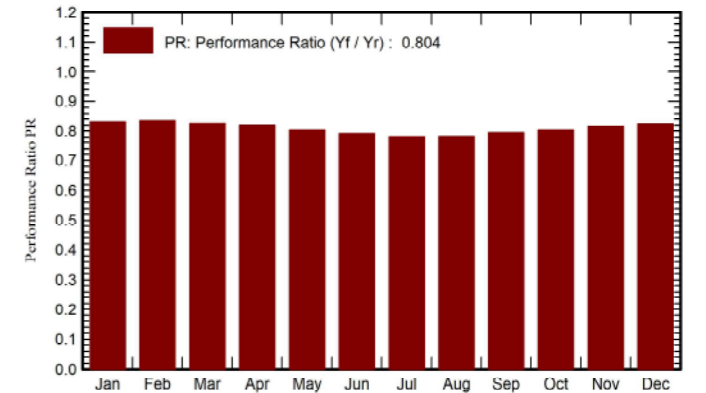
Produced Energy 163515 kWh/year

Specific production 1419 kWh/kWp/year  
 Perf. Ratio PR 80.44 %

**Normalized productions (per installed kWp)**



**Performance Ratio PR**



**Balances and main results**

	GlobHor kWh/m <sup>2</sup>	DiffHor kWh/m <sup>2</sup>	T_Amb °C	GlobInc kWh/m <sup>2</sup>	GlobEff kWh/m <sup>2</sup>	EArray kWh	E_Grid kWh	PR ratio
January	62.6	24.39	7.08	86.5	83.0	8440	8280	0.831
February	80.1	35.48	7.86	101.0	97.3	9880	9706	0.834
March	129.7	51.67	11.15	151.1	146.4	14642	14360	0.825
April	157.1	74.50	13.64	168.6	163.9	16236	15920	0.819
May	194.2	77.34	17.40	199.8	194.2	18917	18514	0.804
June	208.1	84.46	21.86	209.2	203.4	19501	19080	0.792
July	210.8	82.11	24.53	213.7	207.7	19662	19219	0.781
August	186.1	74.69	24.50	197.7	192.5	18233	17817	0.782
September	135.6	57.62	20.48	152.9	148.2	14297	13998	0.795
October	99.3	44.14	17.14	120.9	116.8	11442	11206	0.805
November	64.2	28.70	11.41	85.6	82.0	8201	8047	0.816
December	54.2	23.08	7.89	77.6	74.1	7512	7369	0.825
Year	1581.9	658.18	15.46	1764.6	1709.3	166963	163515	0.804

**Legends**

- GlobHor Global horizontal irradiation
- DiffHor Horizontal diffuse irradiation
- T\_Amb Ambient Temperature
- GlobInc Global incident in coll. plane
- GlobEff Effective Global, corr. for IAM and shadings
- EArray Effective energy at the output of the array
- E\_Grid Energy injected into grid
- PR Performance Ratio

