

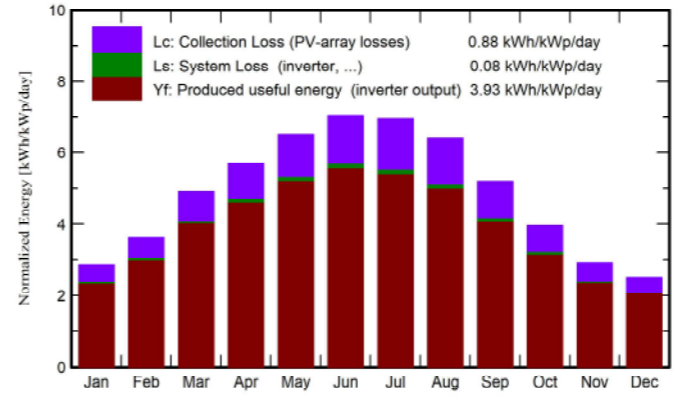
Planta cubierta - Producción fotovoltaica anual estimada

Main results

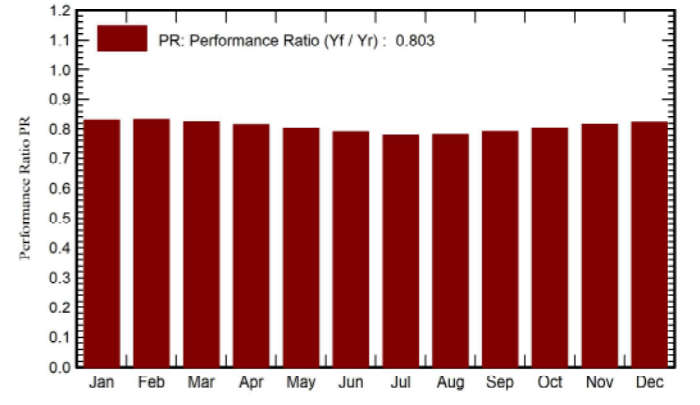
System Production

Produced Energy 165053 kWh/year Specific production 1433 kWh/kWp/year
 Perf. Ratio PR 80.29 %

Normalized productions (per installed kWp)



Performance Ratio PR



Balances and main results

	GlobHor kWh/m ²	DiffHor kWh/m ²	T_Amb °C	GlobInc kWh/m ²	GlobEff kWh/m ²	EArray kWh	E_Grid kWh	PR ratio
January	63.3	23.04	7.66	88.5	84.8	8614	8454	0.829
February	80.4	35.37	8.56	101.2	97.7	9876	9697	0.832
March	130.6	53.26	11.92	152.2	147.6	14726	14441	0.824
April	158.2	69.59	14.54	170.5	165.6	16347	16020	0.816
May	196.6	79.22	18.16	202.0	196.4	19080	18673	0.802
June	210.1	83.72	22.22	211.7	206.0	19722	19294	0.791
July	212.9	80.43	24.81	215.7	209.5	19829	19382	0.780
August	187.2	73.37	24.78	199.2	193.9	18360	17939	0.782
September	136.9	52.25	21.13	155.7	151.0	14522	14209	0.792
October	100.5	45.54	17.80	122.5	118.4	11577	11340	0.804
November	65.1	29.40	12.07	87.4	83.8	8382	8225	0.817
December	54.9	23.54	8.36	77.9	74.4	7520	7380	0.823
Year	1596.5	648.73	16.05	1784.5	1729.2	168553	165053	0.803

Legends

- GlobHor Global horizontal irradiation
- DiffHor Horizontal diffuse irradiation
- T_Amb Ambient Temperature
- GlobInc Global incident in coll. plane
- GlobEff Effective Global, corr. for IAM and shadings
- EArray Effective energy at the output of the array
- E_Grid Energy injected into grid
- PR Performance Ratio

